

CREATE
YOUR STYLE
with SWAROVSKI ELEMENTS



Instruction Guide

DESIGN PROJECT
MOTHER'S DAY
NECKLACE
"VIBRANT HEARTS"

MOTHER'S DAY NECKLACE "VIBRANT HEARTS"



SWAROVSKI ELEMENTS

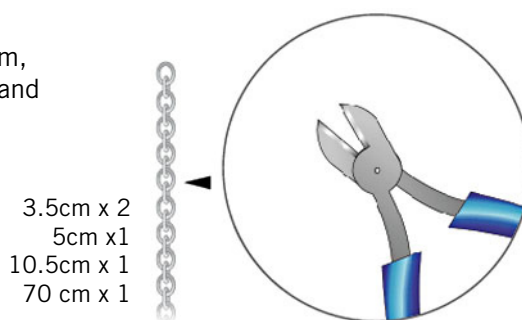
Article	Product Group	Article No.	Amount	Size	Color	Color Code
	Pendants	6261	1 pc.	36 mm	Crystal Red Magma	001 REDM
	Pendants	6262	1 pc.	26 mm	Crystal Satin	001 SAT
	Pendants	6264	1 pc.	18 mm	Crystal Astral Pink	001 API

Supplies & Tools

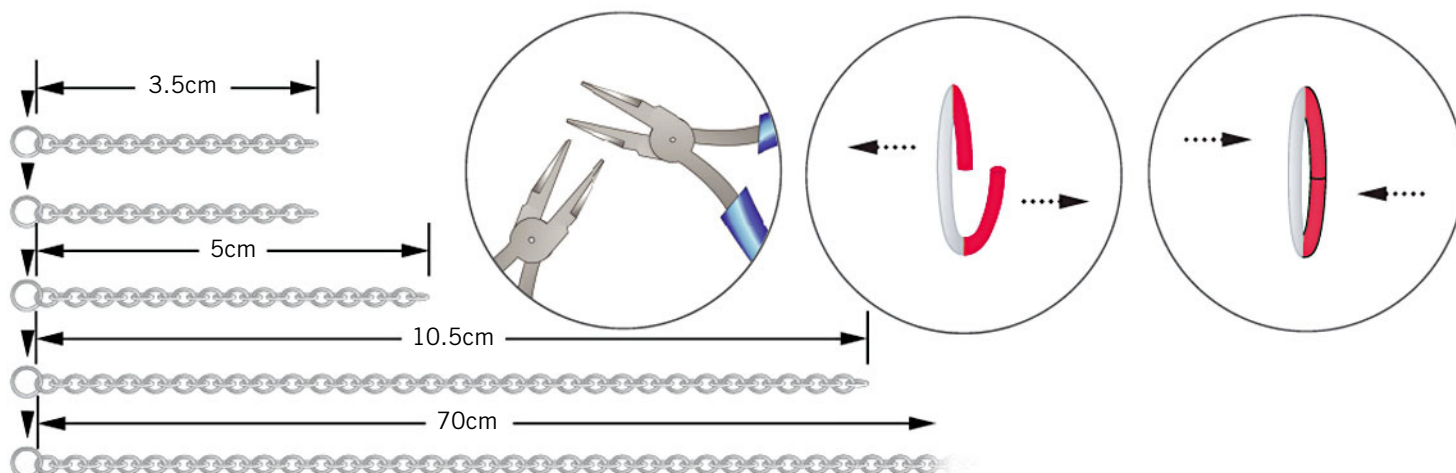
Supplies
 Silver Chain, 95cm
 11x Silver Jump Rings, 4mm
 2x Silver Jump Rings, 6mm
 1x Silver Lobster Clasp
 1mm Silver Wire, 10cm

Tools
 Flat Nose Pliers
 Pencil
 Side Cutter

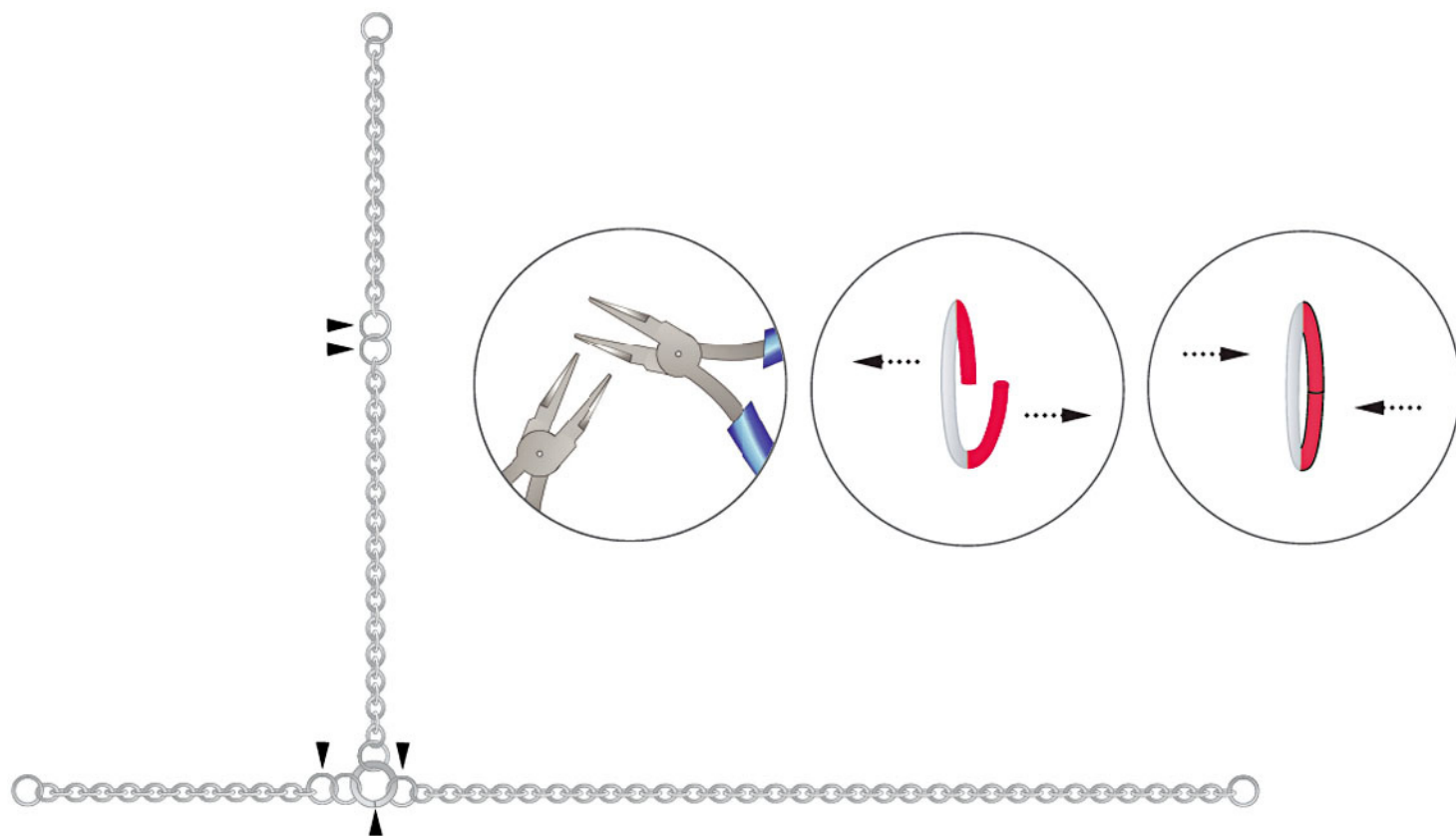
STEP 1: Cut a chain into two pieces of 3.5 cm, one piece of 5 cm, one of 10.5 cm and a third piece of 70 cm.



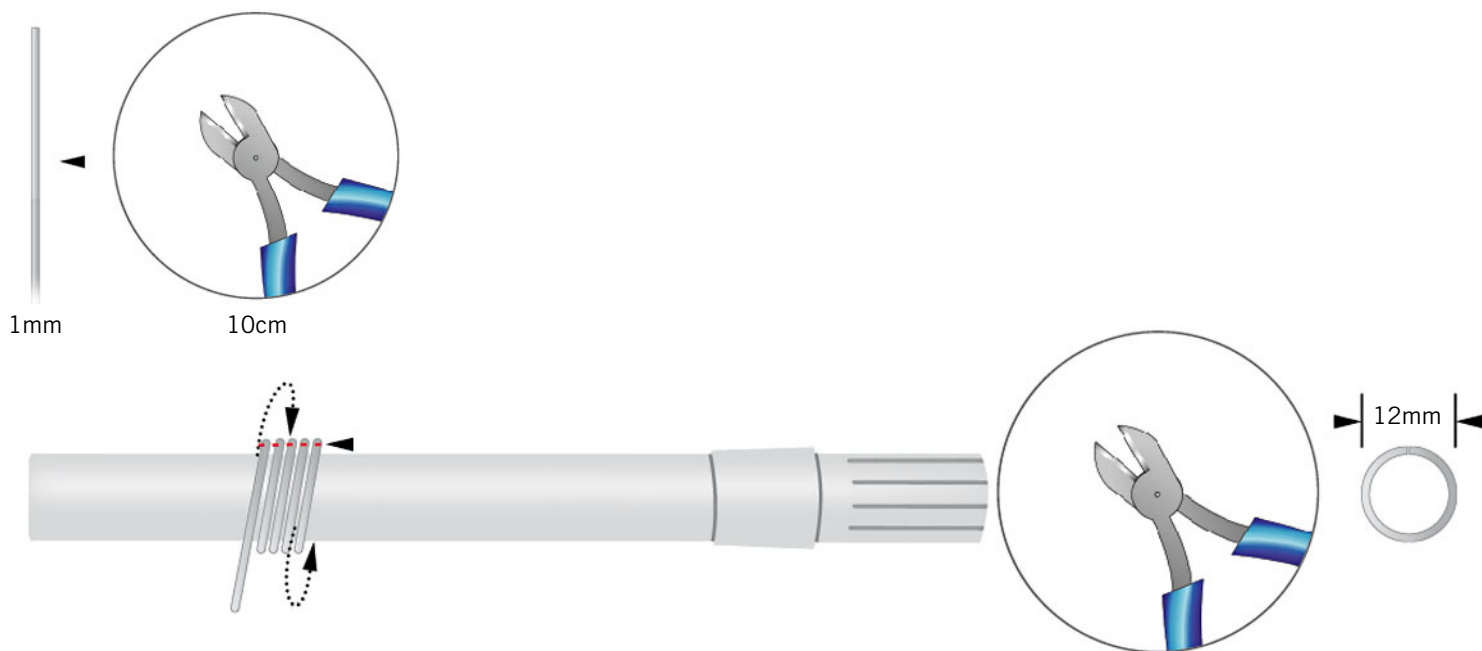
STEP 2: Attach one 4 mm jump ring to each piece of chain as shown.



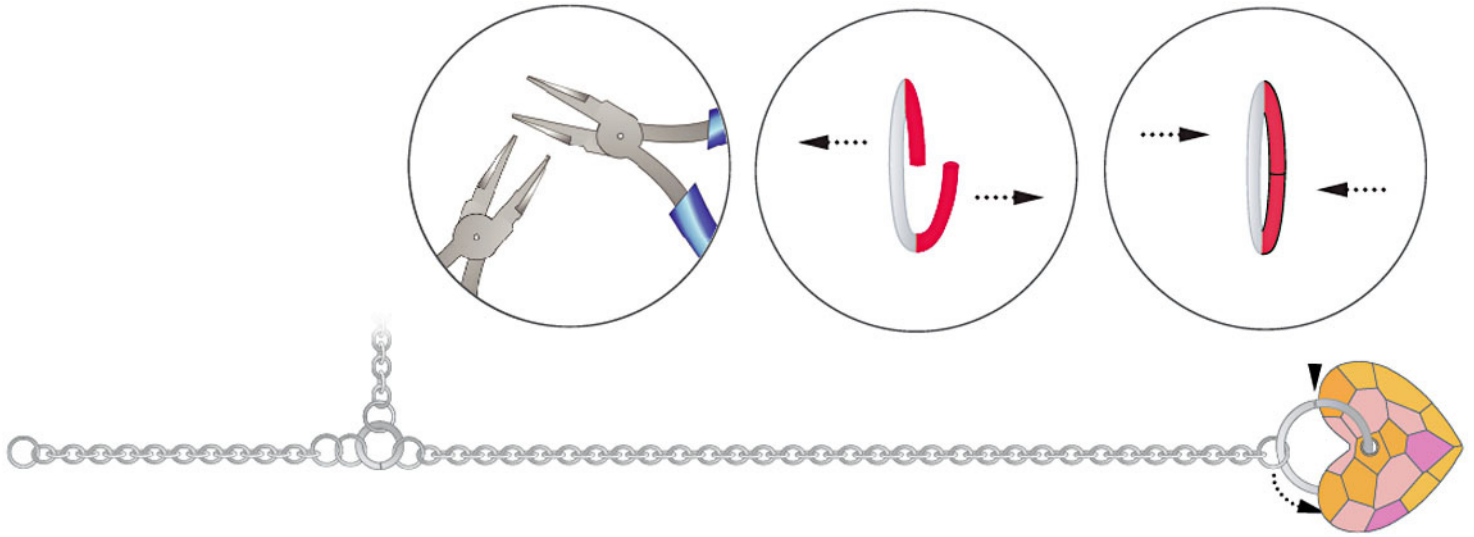
STEP 3: Connect the 3.5 cm chain with the 5 cm chain with a 4 mm jump ring on each end.
Attach two more 4 mm jump rings to the other 3.5 cm chain and then to a 6 mm jump ring.
Then attach the 10 cm chain with a 4 mm jump ring and insert into the 6 mm jump ring as well.



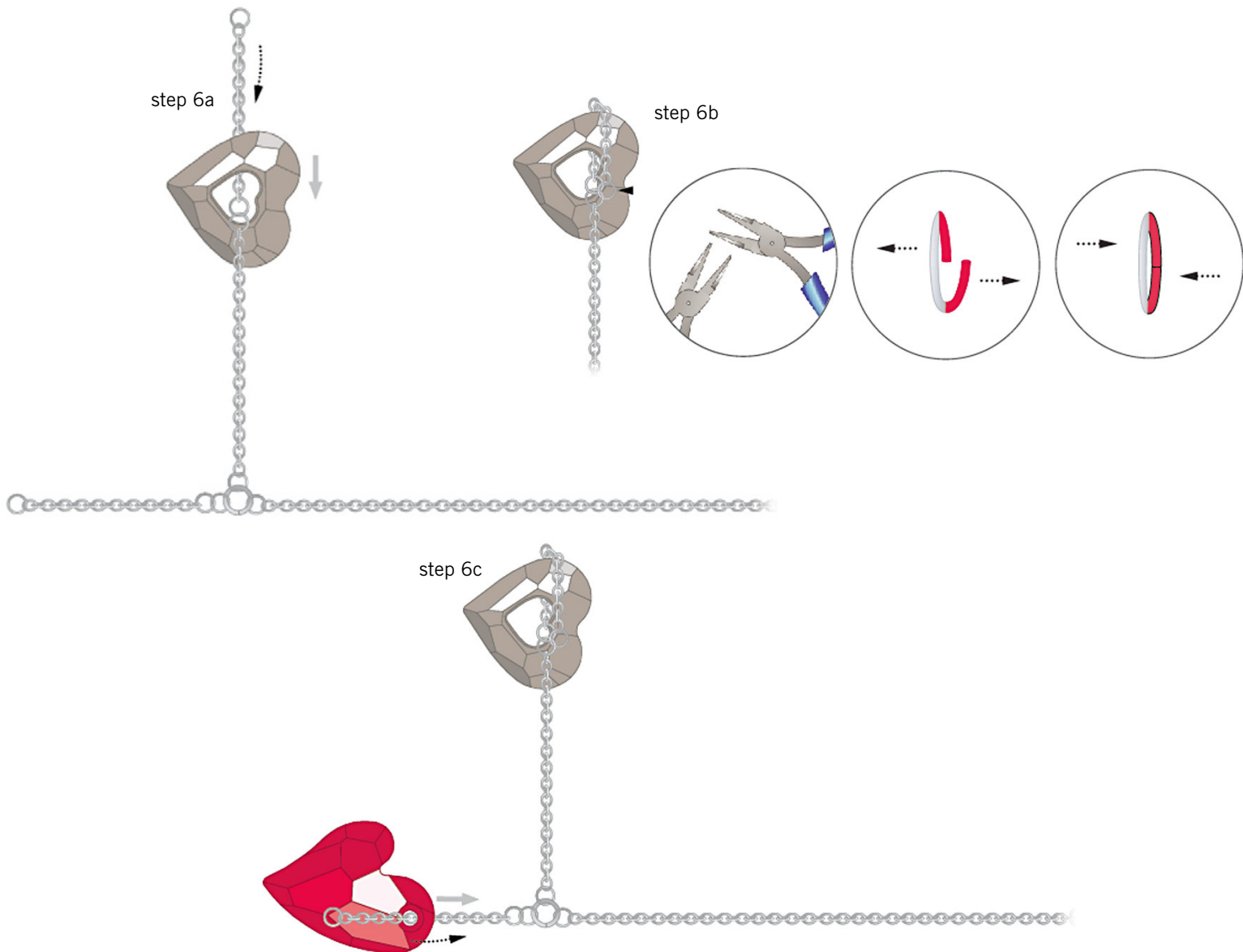
STEP 4: Cut a 10 cm piece of 1 mm gauge wire and wind it around a pen or pencil of approximately 10 mm thickness.
Cut through this spiral to get a 12 mm jump rings as shown in the illustrations.



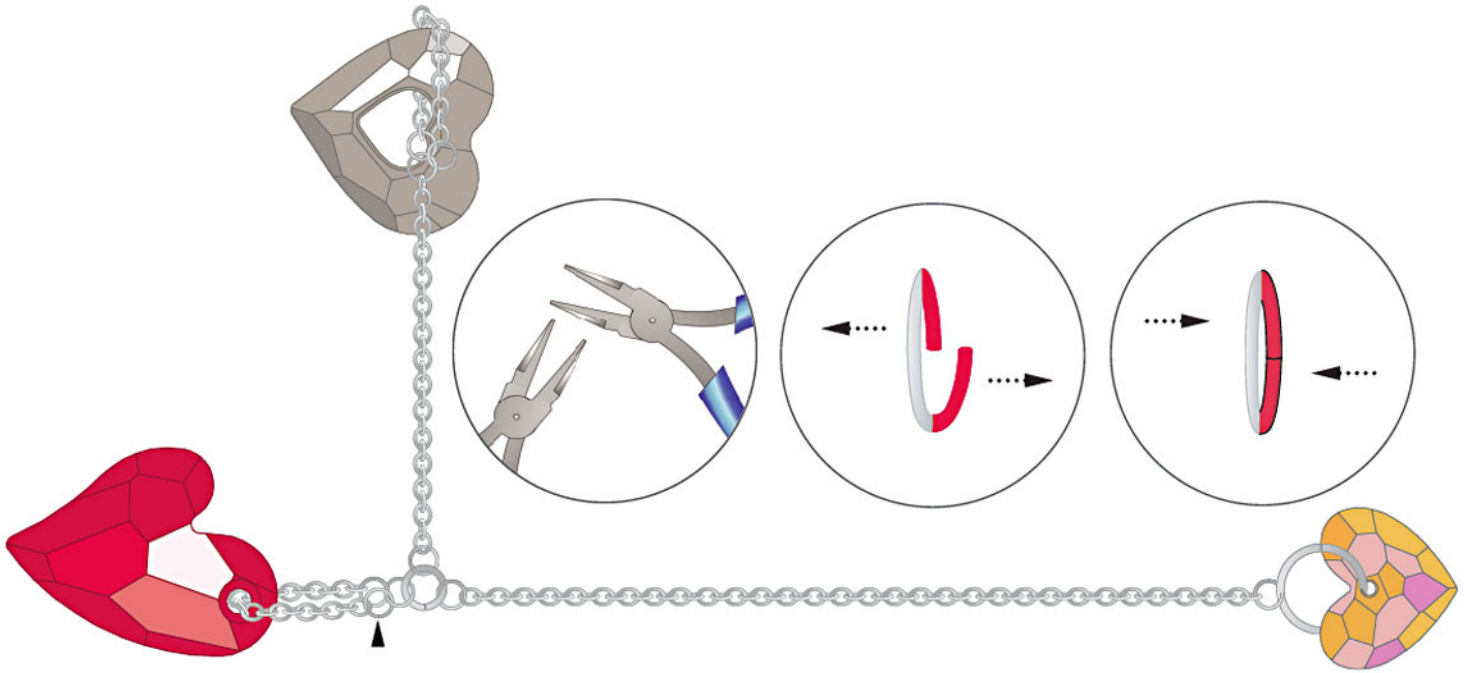
STEP 5: Using one of the 12 mm jump rings attach the SWAROVSKI ELEMENTS Heart Pendant article 6264, 18 mm Crystal Astral Pink to the chain.



STEP 6: Insert the SWAROVSKI ELEMENTS Heart Pendant article 6262, 26 mm Crystal Satin through the upper end of the chain. Form the chain into a loop around the inside of the heart and connect this end to the 4 mm jump ring. Insert the SWAROVSKI ELEMENTS Heart Pendant article 6261 36 mm, Crystal Red Magma onto the chain.



STEP 7: Form a loop with this chain end and connect it to the other 4 mm jump ring using fl at nose pliers as shown.



STEP 8: Attach the lobster clasp to the 70 cm silver chain using a 4 mm jump ring and insert this chain through the 6 mm jump ring that is connecting the other three chains with the heart pendants. Attach a 4 mm jump ring to the other end of the 70 cm chain then attach a 6 mm jump ring to the 4 mm jump ring.

